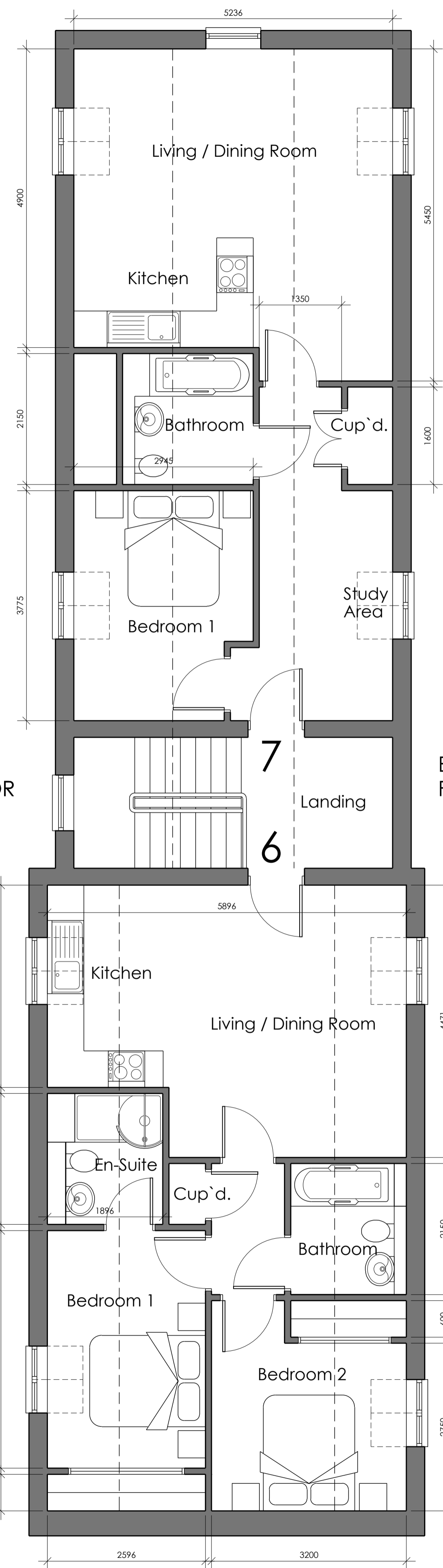


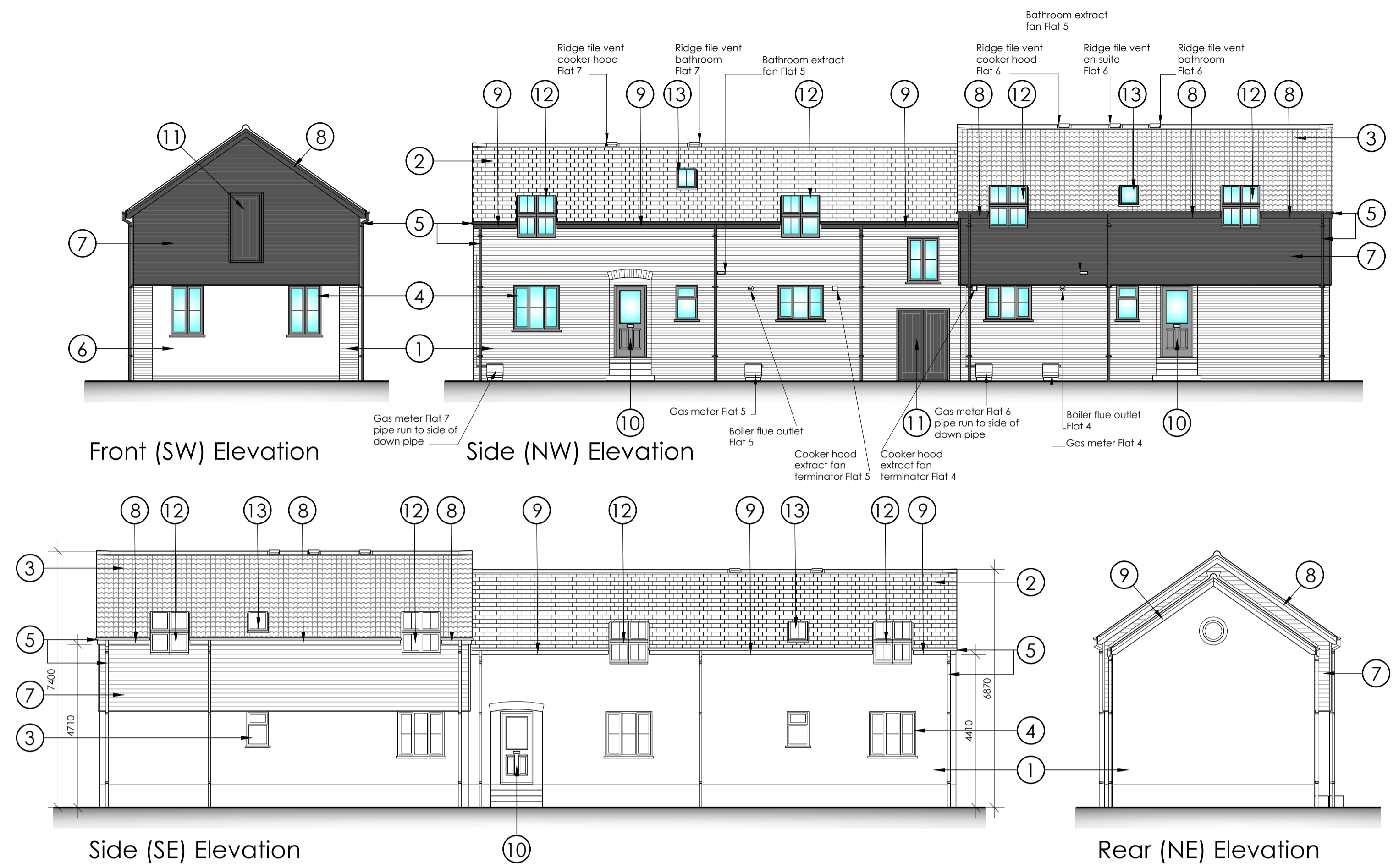
BLOCK B GROUND FLOOR PLAN



BLOCK B FIRST FLOOR PLAN

BLOCK C GROUND FLOOR

BLOCK C FIRST FLOOR



MATERIALS LEGEND

- ① FACING BRICKWORK, WEINENBERGER ST IVES CREAM RUSTICA
- ② NATURAL SPANISH SLATE
- ③ CLAY PANTILES, WILLIAM BLYTH, BARCO, OLD ENGLISH PANTILES, COLOUR WEATHERED RED.
- ④ UPVC CASEMENT WINDOWS WITH HORIZONTAL BAR, COLOUR ANTHRACITE GREY RAL 7016
- ⑤ BLACK, PLASTIC, TRADITIONAL STYLED ROUND RAINWATER GOODS, 75mm DIA. DOWN PIPES.
- ⑥ THROUGH COLOURED WHITE RENDER
- ⑦ CAPE COD, PRE COATED, TIMBER CLADDING, PROFILE REBATED BEVEL 8, COLOUR BLACK CCS90010
- ⑧ BLACK PAINTED TIMBER SOFFITS, BARGE BOARDS AND FASCIAS
- ⑨ ANTHRACITE GREY RAL 7016 PAINTED TIMBER SOFFITS, BARGE BOARDS AND FASCIAS.
- ⑩ INSULAUUX TIMBER COMPOSITE EXTERIOR DOOR BY JELD WEN, PATTERN STANFORD, COLOUR BLACK
- ⑪ FRAMED, LEDGED AND BRACED TIMBER BOARDED DOORS, COLOUR BLACK.
- ⑫ VERTICAL/SLOPING COMBINATION VELUX ROOF WINDOWS, COLOUR ANTHRACITE GREY RAL 7016
- ⑬ VELUX CONSERVATION ROOF WINDOWS, COLOUR BLACK

REV	DATE	BY	REVISION NOTES
D	02/01/19	NFM	Pantiles, Block B revised to "weathered red"
C	15/11/18	NFM	Meter boxes, boiler flue & extract terminals added.
B	30/10/18	NFM	Materials schedule added
A	21/09/18	NFM	Pantiles shown on Block B

Suite 2, Clare Hall,
St Ives Business Park,
Parsons Green,
St Ives,
Cambs, PE27 4WY

© COPYRIGHT
Tel: 01480 494969
Email: enquiries@planningandarchitecture.co.uk
Web: www.planningandarchitecture.co.uk

PARTNERS
in PLANNING
and ARCHITECTURE

PROJECT
Proposed residential development on former ATS site, East Street, St Ives, Cambridgeshire

CLIENT
Abbey Group

DRAWING TITLE
Blocks B & C
Floor Plans and Elevations

DRAWN BY	SCALE	1:50, 1:100 @ A1
NFM	0.5	1.0 2.0
DATE	DWG. No.	REV.
05/07/18	17-08-102	D