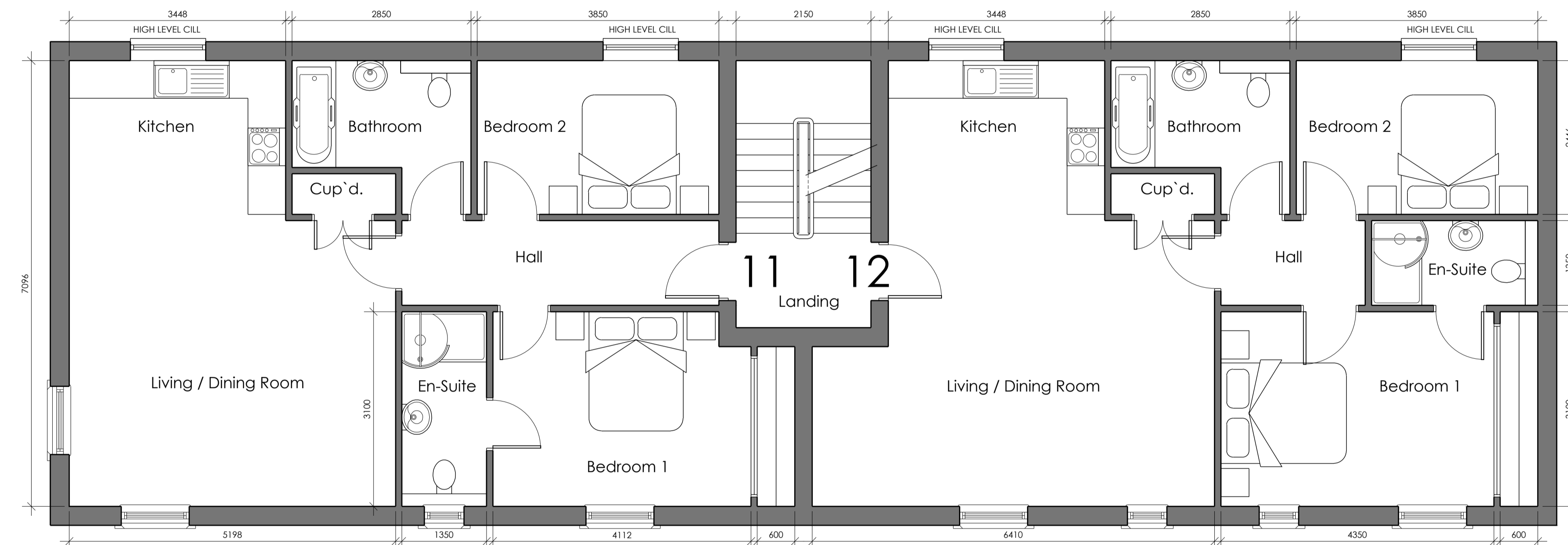
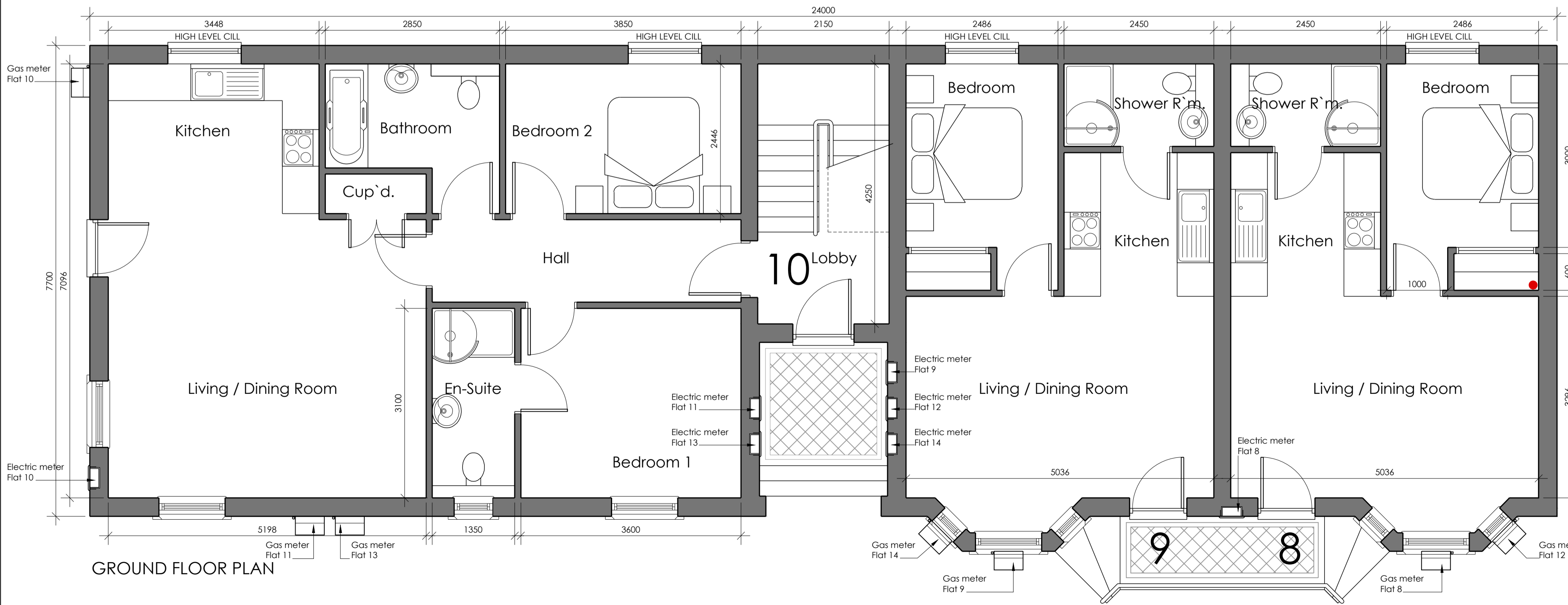


SECOND FLOOR PLAN



FIRST FLOOR PLAN

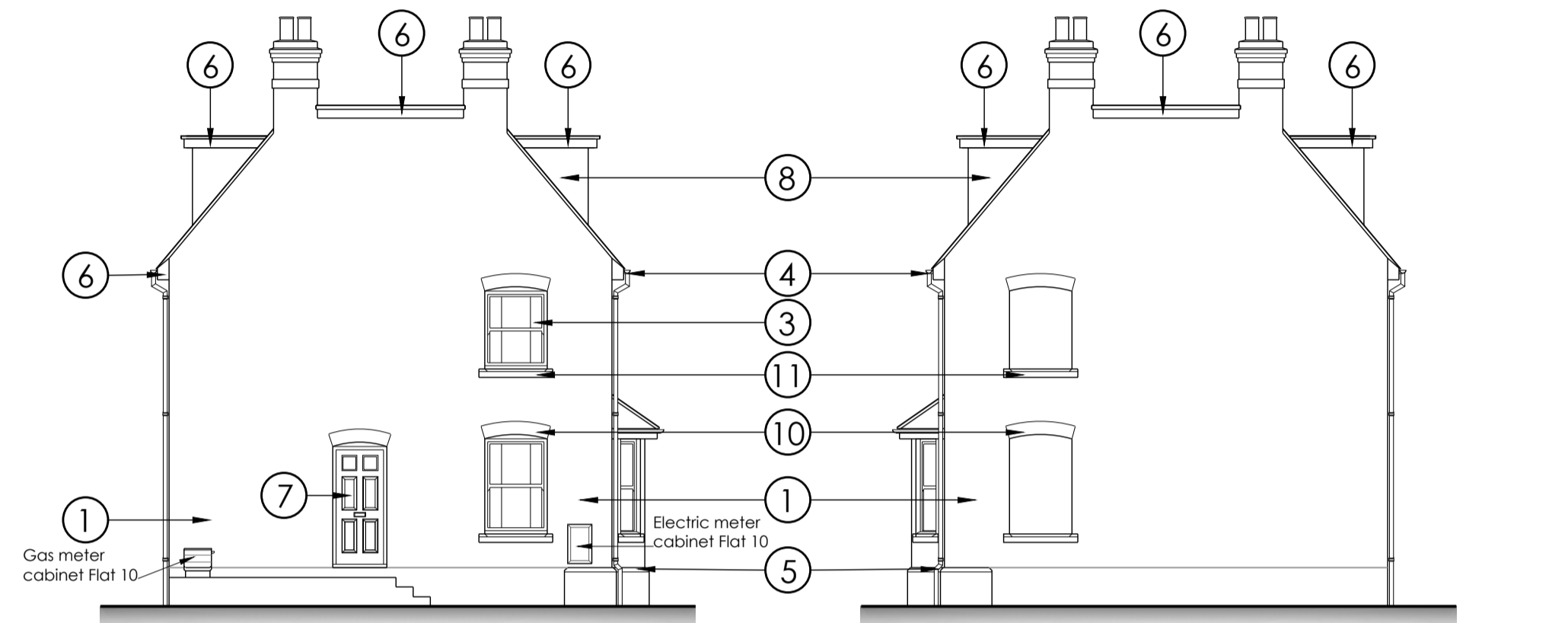


GROUND FLOOR PLAN



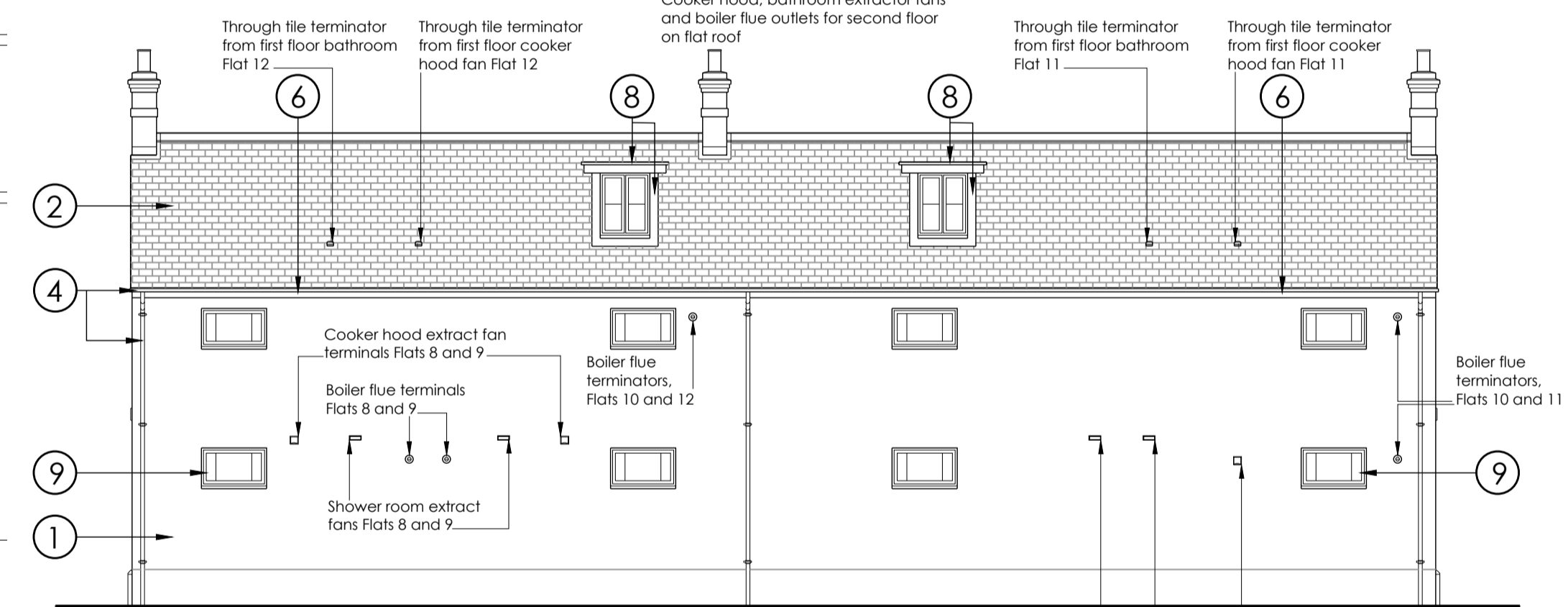
FRONT (SW) ELEVATION

Gas meter cabinet Flat 11 Gas meter cabinet Flat 13 Gas meter cabinet Flat 14 Gas meter cabinet Flat 9 Electric meter cabinet Flat 8 Gas meter cabinet Flat 8 Gas meter cabinet Flat 12



SIDE (NW) ELEVATION

SIDE (SE) ELEVATION



REAR (NE) ELEVATION

MATERIALS LEGEND

- ① FACING BRICKWORK, WEINBERGER ST IVES CREAM RUSTICA
- ② NATURAL SPANISH SLATE
- ③ UPVC TRADITIONAL SLIDING SASH WINDOWS WITH HORNS, COLOUR ANTHRACITE GREY RAL 7016
- ④ BLACK, PLASTIC, TRADITIONAL STYLED ROUND RAINWATER GOODS, 75mm DIA. DOWN PIPES.
- ⑤ SMOOTH BLUE, ENGINEERING PLINTH STRETCHER.
- ⑥ ANTHRACITE GREY RAL 7016 PAINTED TIMBER SOFFITS, BARGE BOARDS AND FASCIAS.
- ⑦ INSULAUX TIMBER COMPOSITE EXTERIOR DOOR BY JELD WEN, PATTERN BARRINGTON, COLOUR BLACK
- ⑧ LEAD FACED DORMER CHEEKS, FRONT AND ROOF
- ⑨ UPVC TOP HUNG, CASEMENT WINDOWS WITH VERTICAL BARS. COLOUR ANTHRACITE GREY RAL 7016
- ⑩ FACING BRICK SOLDIER COURSE ARCHES. BRICKS TO BE AS MAIN WALLS
- ⑪ RECONSTITUTED STONE, STOOLED CILLS, 140mm DEEP, COLOUR LIGHT PORTLAND
- ⑫ 3 COURSE PROJECTING FACING BRICK BAND, BRICKS TO MATCH MAIN WALLS. TOP COURSE STRETCHER, MID COURSE DENTAL HEADERS, BOTTOM COURSE STRETCHER
- ⑬ UPVC NARROW MODULE, CASEMENT WINDOWS WITH HORIZONTAL BAR, COLOUR ANTHRACITE GREY RAL 7016
- ⑭ 10" BLACK, TRADITIONAL UK CAST BULLS EYE WALL TIES (PATRESS PLATES)

REV	DATE	BY	REVISION NOTES
B	15/11/18	NFM	Meter boxes, boiler flues & extract fan terminals added.
A	30/10/18	NFM	Materials schedule added.

Suite 2, Clare Hall,
St Ives Business Park,
Parsons Green,
St Ives,
Camps, PE27 4WY

© COPYRIGHT
Tel: 01480 494969
Email: enquiries@planningandarchitecture.co.uk
Web: www.planningandarchitecture.co.uk

PARTNERS
in PLANNING
and ARCHITECTURE

PROJECT
Proposed residential development on
former ATS site, East Street,
St Ives,
Cambridgeshire

CLIENT
Abbey Group

DRAWING TITLE
Block D
Floor Plans and Elevations

DRAWN BY	SCALE
NFM	1:50, 1:100 @ A1
DATE	DWG. No.
05/07/18	17-08-103
	REV.
	B